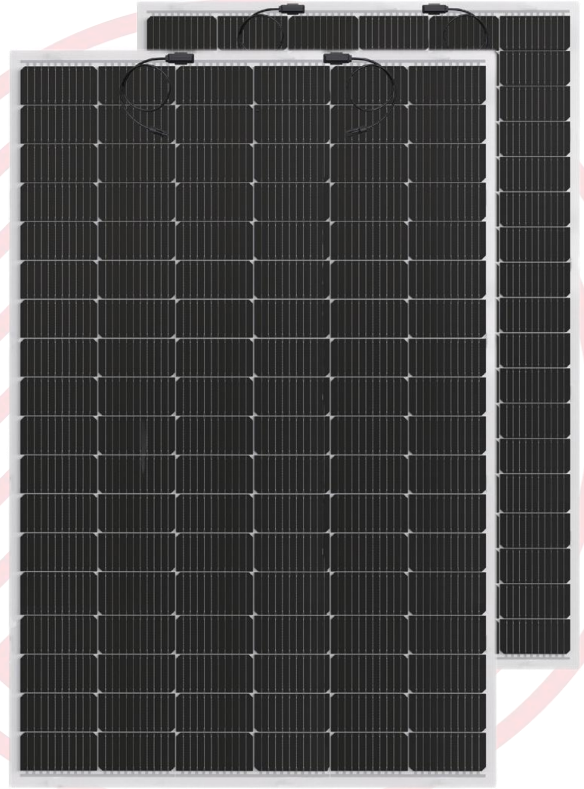


Flexible Solar Panel

400-410W



Module characteristics



Light Weight
Frameless, Glass free



Flexibility
Special manufacturing process and materials provide bending ability



Aesthetic Apperance
Half cell design, High Consistency



Easy Installation
Light weight, easy for handling



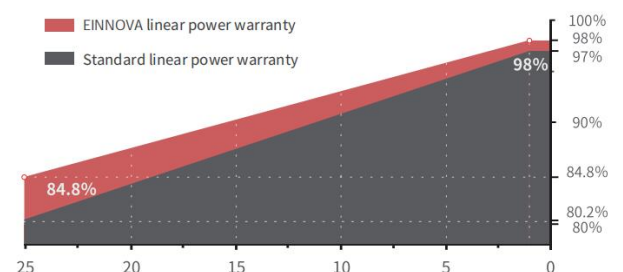
Customized
Provide Customized Serice



Long and reliable quality assurance

IEC61215(2016), IEC61730(2016)
ISO9001:2015: Quality management system
ISO14001:2015: Environmental management system
ISO45001:2018: Occupational health and safety management system

Linear Performance Warranty

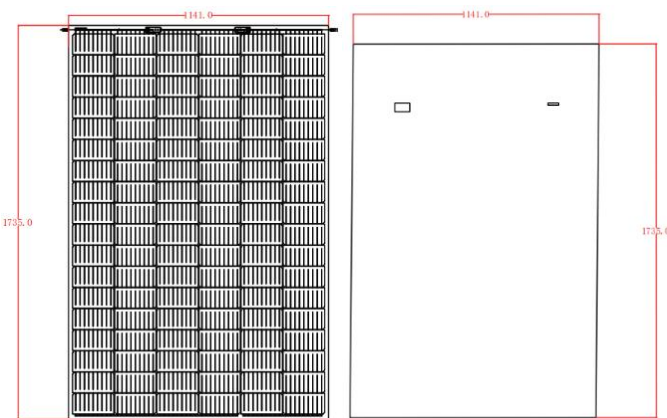


Electrical Parameters

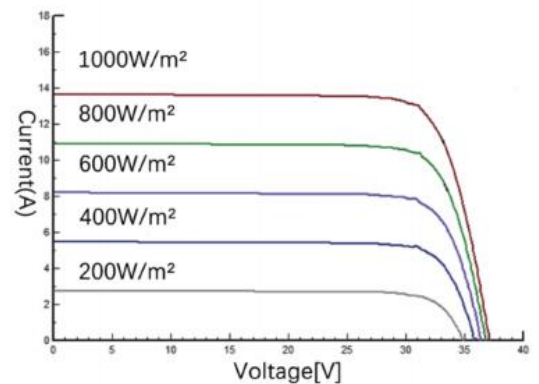
STC	ESM-400-F	ESM-405-F	ESM-410-F
Maximum Power (Pmax)	400W	405W	410W
Maximum Power Voltage (Vmp)	30.7V	30.8V	30.9V
Maximum Power Current (Imp)	13.03A	13.16A	13.29A
Open Circuit Voltage (Voc)	37.1V	37.2V	37.3V
Short Circuit Current (Isc)	13.66A	13.81A	13.90A
Module Efficiency - η_m (%)	20.21%	20.46%	20.71%
Operational Temperature	-40°C~+85°C		
Maximum System Voltage	1500VDC		
Maximum Series Fuse Rating	20A		
Application Class	Class A		
Power Tolerance	0~+5%		
Temperature Coefficient of Pmax	-0.380%/°C		
Temperature Coefficient of Voc	-0.280%/°C		
Temperature Coefficient of Isc	+0.020%/°C		
Nominal Operating Cell Temperature	41±2°C		

STC: Irradiance 1000W/m², module temperature 25°C, AM=1.5

Mechanical Diagrams



Curve



Packaing

Container	20GP	40GP
Pieces per pallet	70	70
Pieces per container	420	1820

Specification

Solar Cell	mono crystalline silicon cell
Cell Size	182×91mm
No. of cells	108
Module Dimensions	1735×1141×18
Weight	6.3kg
Backsheet	White PV Backsheet
Output cables	4mm ²
Junction Box	IP67
Cable length	(+)/(-)500mm
Connector	MC4 compatible

EINNOVA SOLARLINE ENERGY CORP. LIMITED

210000 Nanjing
 PEOPLE'S REPUBLIC OF CHINA
 TEL: +86-25-8479-2033
 Cell: +86-138-13088384
 EMAIL: emma.wu@einnova-solarline.com
 Website: www.einnova-solarline.com