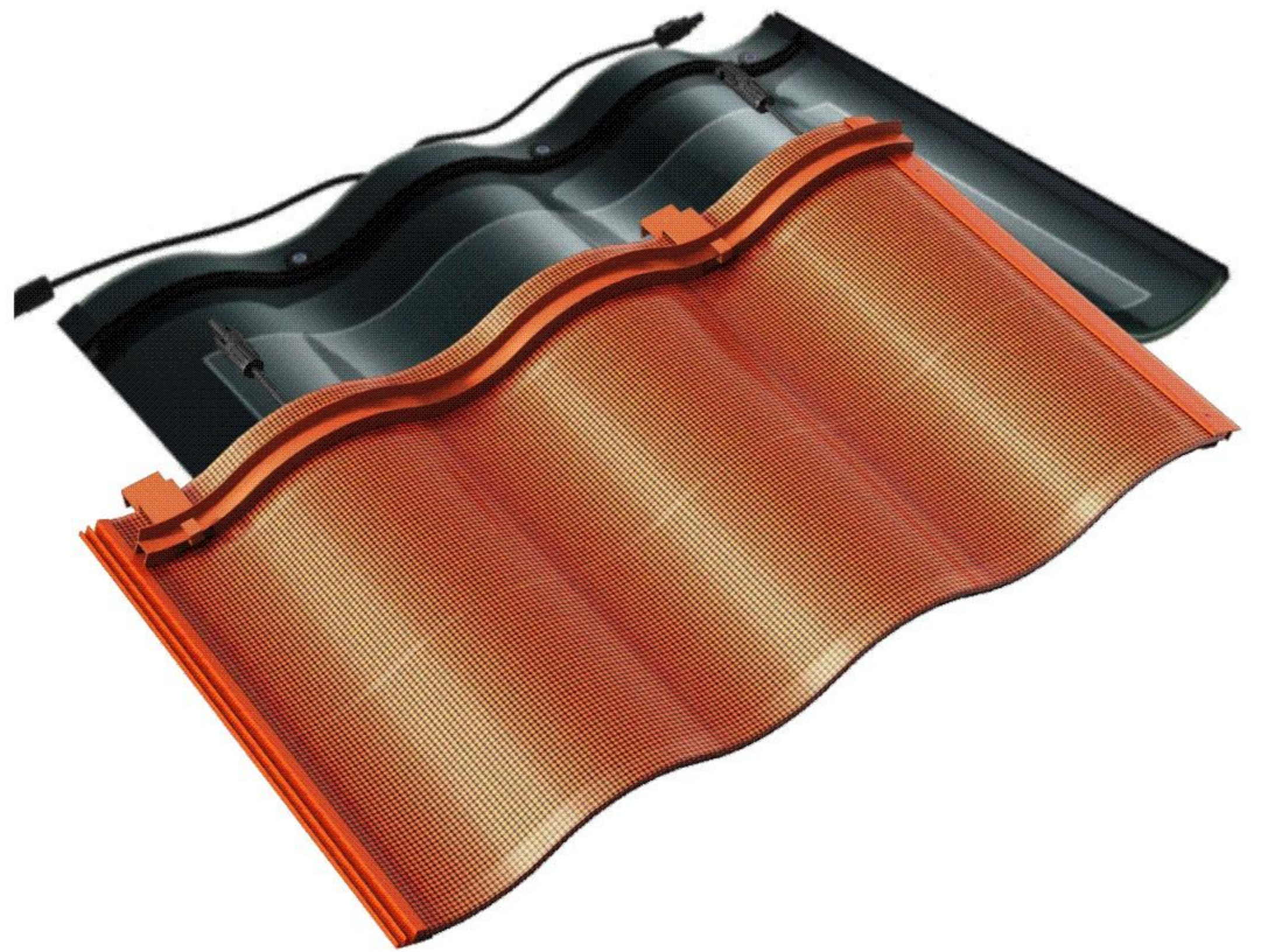


# Solar Roof Curved Tiles

Pmax: 45W



## FEATURES

### Easy Installation & Construction

Quick installation  
Compatible with standard roofing methods  
Saves time and labor costs

### Aesthetic and Stylish

Seamlessly blend in with the building  
Two colors available for customization

### Superior Waterproof Performance

Highly resistant to water infiltration  
Durable in extreme weather  
Ensures long-term roof protection

### Lightweight

Suitable for low-bearing capacity roofs  
Easy for transportation and installation

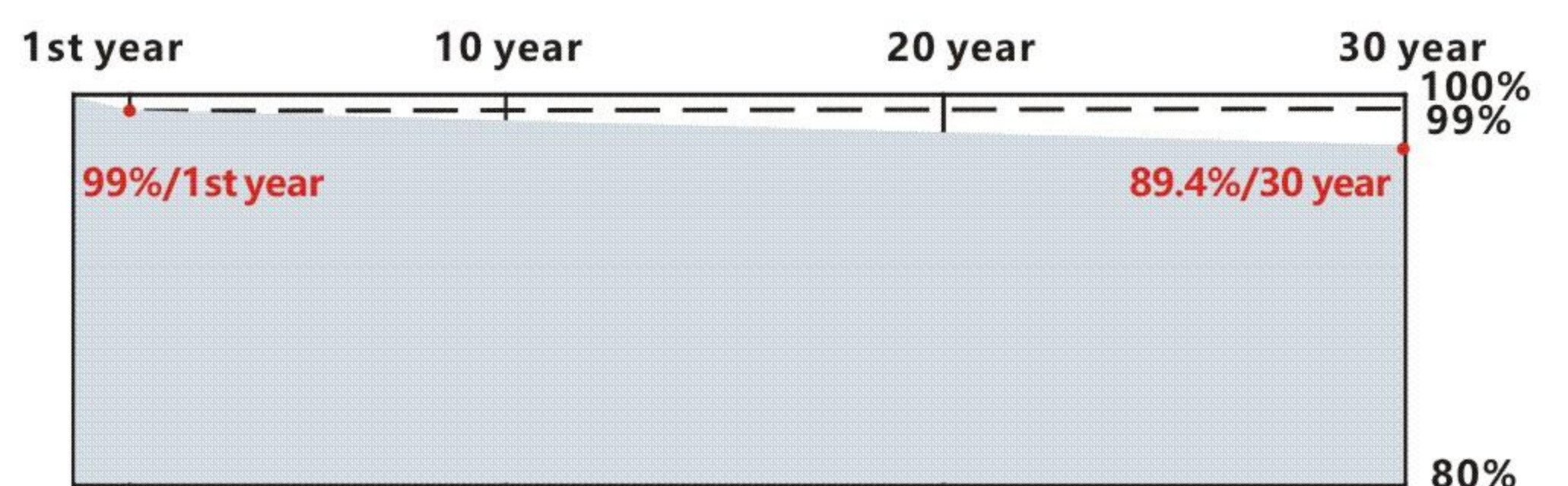
### Harsh environmental adaptation

Passing through salt spray and ammonia corrosion tests

### Long and reliable quality

IEC61215(2016), IEC61730(2016)  
ISO9001:2015: Quality management system  
ISO14001:2015: Environmental management system  
ISO45001:2018: Occupational health and safety management system

Factory address: Building No.4, Qingxi industrial park phase two, Hanshan County, Ma Anshan City, Anhui, China



- First year power attenuation  $\leq 1\%$ .
- Linear attenuation of  $\leq 0.4\%$  per year from the 2nd to 30th year

**15 year**

**Workmanship warranty**



**30 year**

**Performance warranty**

- 1st year degradation less than 1%
- 30 years power output 89.4%
- ★ ISO 9001: 2015 Quality Management
- ★ ISO14001: 2015 Environment

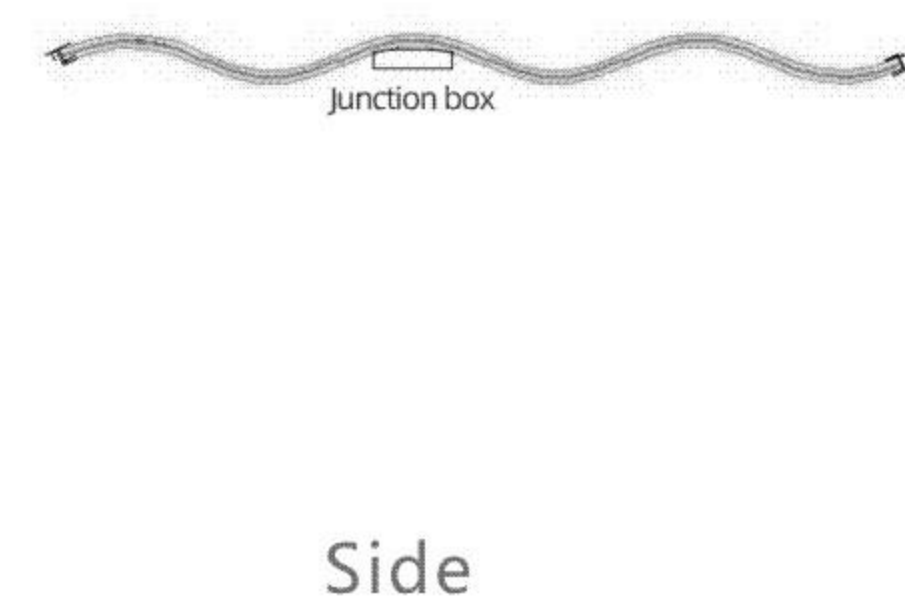
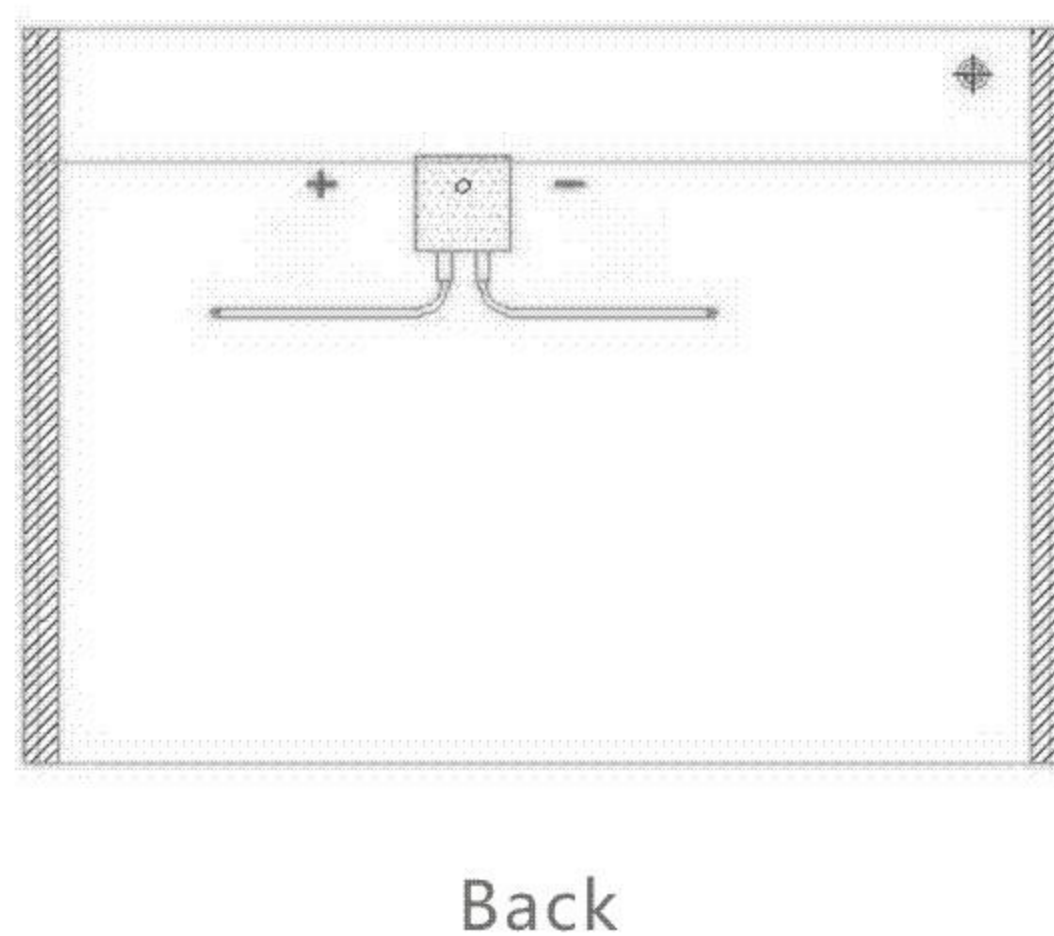
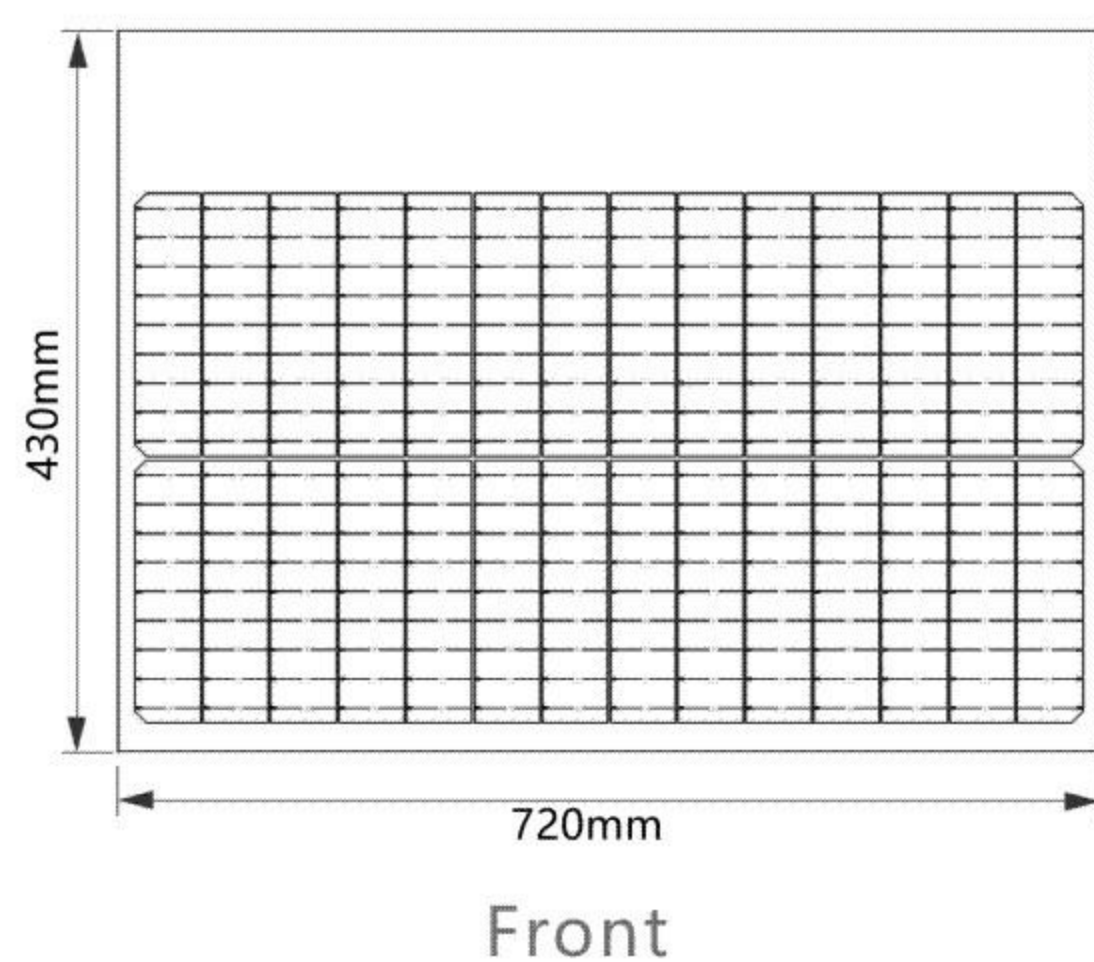
Strictly complying with IEC 61215 and IEC 61730 standards

## SPECIFICATION

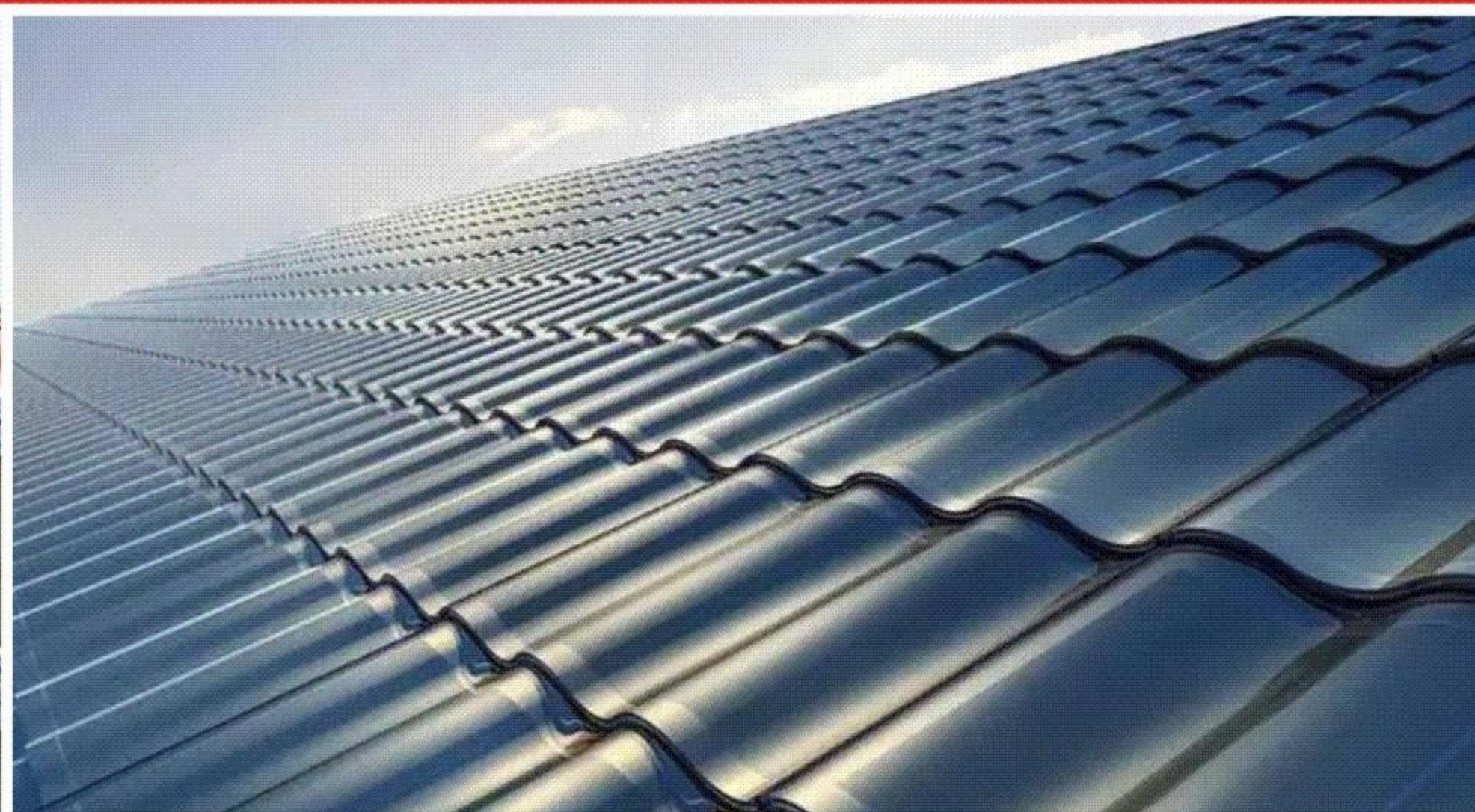
Model Type	ESM-CT45W (Black) 	ESM-CT38W (Terra-cotta) 
	STC	STC
Maximum Power ( Pmax )	45	38
Open Circuit Voltage ( Voc )	5.48	5.48
Short Circuit Current ( Isc )	10.36	9.14
Maximum Power Voltage ( Vmp )	4.53±5%	4.53±5%
Maximum Power Current ( Imp )	9.93±5%	8.38±5%
Module Efficiency - ηm (%)	20.6%	21.4%
Operational Temperature	-40°C ~ +85°C	
Maximum System Voltage	1000VDC	
Maximum Series Fuse Rating	20A	
Weight	4.5kg	
Product size	720*430*35mm	
Wind Rating	Class II	
Max Load ( Front/back )	5400Pa/2400Pa	

STC: Irradiance 1000W/m<sup>2</sup> Cell temperature 20°C Atmospheric quality = 1.5

## PRODUCT DRAWING



## APPLICATION



**EINNOVA SOLARLINE ENERGY CORP. LIMITED**

Cell: +86 13813088384

Email : emma.wu@einnova-solarline.com

Website : [www.einnova-solarline.com](http://www.einnova-solarline.com)

Factory address: Building No.4, Qingxi industrial park phase two, Hanshan County, Ma Anshan City, Anhui, China